



AQ Level Switch

AQ Level Sensor

Continuously monitors liquid levels

AQ Level Switch operates without direct contact with liquid. It monitors the level in a container using soundwaves. The soundwaves register the presence of gas or liquid in the container and the results are displayed on an external control unit.

■ Design

AQ Level Switch is compact and without any contact with the process media it monitors.

The AQ Level Switch is shaped to fit a round or flat container. There are different sizes to fit different outer diameters. The AQ Level Switch comes in three different models; LS-model for Ex environments, KS-model for compact and high temperature environments and RS-model when liquid properties change during operation.

■ Usability

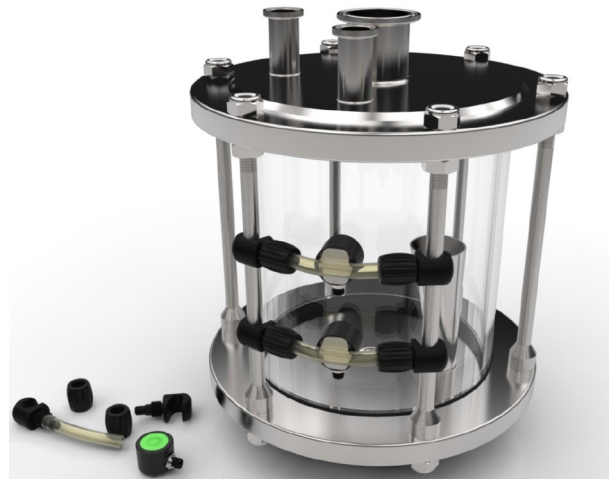
AQ Level Switch can be attached to steel, glass or plastic containers and is also available in ATEX certified model.

The AQ Level Switch monitors a single level in a container. The most common application is guard for minimum and maximum level.

The AQ Level Sensor monitors the analog liquid level inside a container by transmitting soundwaves from the bottom of the container to the liquid surface without contact with the process media.

■ Reliable and flexible

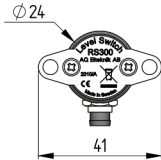
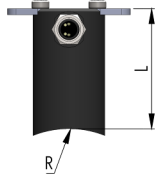
The Level Switch or Level Sensor is easy to install since there is no need for making holes in the container. It is easily attached to the outside of the container using glue, clamps or wires. Level Switch / Sensor connects to a control unit Ultrasound Controller D72 or DP72.



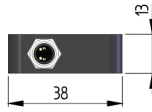
AQ Level Switch MS



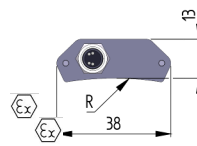
AQ Level Switch RS/KS



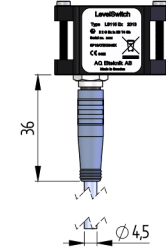
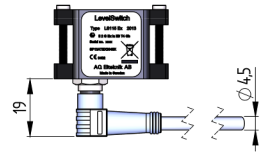
AQ Level Switch LSF



AQ Level Switch LS



AQ Level Switch Cables



AQ Level Switch, LS- model, POM-H plastic

Model number	LS46	LS49	LS53	LS65	LS75	LS85	LS100
Fit container diameter (mm)	44-47	47-51	51-56	57-70	70-79	79-91	91-106
Model number	LS115	LS135	LS165	LS200	LS300	LS500	LSF
Fit container diameter (mm)	106-123	123-146	146-180	180-240	240-370	370-700	Flat container

Container continuous temperature -15°C to 60°C, Ex model max 60°C

Container temporary temperature 130°C, Ex model max 60°C

Standard cable length 7m. Option: 20m

Option Ex model, SP13ATEX3645X, supplement no1 SP13ATEX3645X_T1

II 2G Ex ia IIB T4 Gb

AQ Level Switch, RS- model, L = 40mm, PEI plastic , KS-model L=20mm PEI

Model number	RS27/ KS27	RS30/ KS30	RS34/ KS34	RS38/ KS38	RS42/ KS42	RS46/KS46	RS53/ KS53	RS65/ KS65
Fit container diameter (mm)	26-28	29-31	32-35	36-40	40-43	44-49	50-57	58-69
Model number	RS75/ KS75	RS85/ KS85	RS115/ KS115	RS165/ KS165	RS250/ KS250	RS600/ KS600	RSF/ KSF	
Fit container diameter (mm)	70-79	80-89	98-135	135-200	201-350	551-1000	Flat container	

Container continuous temperature -20°C to 170°C, Ex model max 60°C

Container temporary temperature 200°C, Ex model max 60°C

Standard cable length 7m. Option: 20m

Option Ex model, SP13ATEX3645X, supplement no1 SP13ATEX3645X_T1

II 2G Ex ia IIB T4 Gb

Control Unit

Model number Ultrasound Controller D72 or DP72 (see datasheet)



AQ M-Tech AB

Bolandsgatan 10
753 23 Uppsala, Sweden
+ 46 (0) 18-470 29 00

www.aqmtech.se

WE ARE RELIABLE