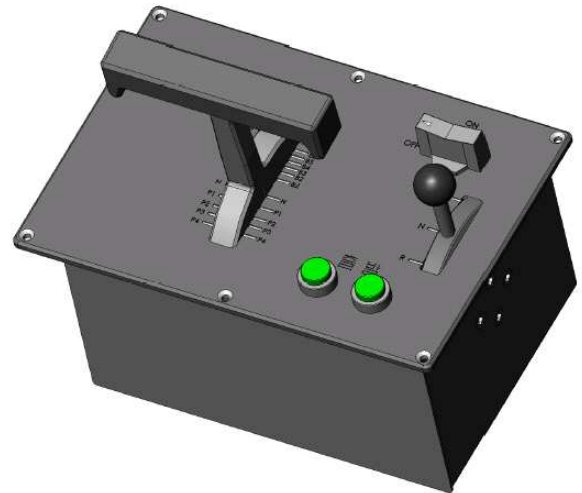


Master Controller

MC 200

Features

- Two parallel analogue output signals for speed and braking reference
- Emergency brake position
- Dead man function in handle
- Ten digital signals for main handle positions. (Costing, traction, braking, emergency brake)
- Nine digital signals for direction handle positions (forward, neutral, reverse)
- Two activation buttons



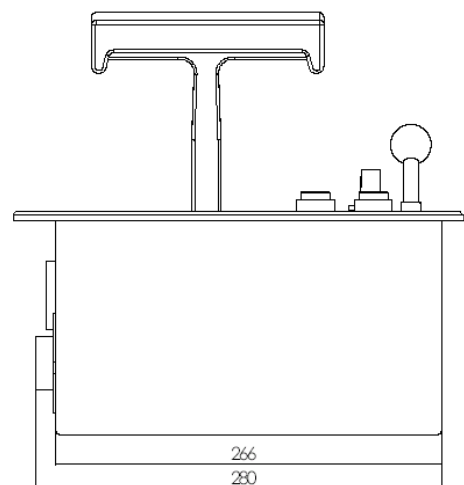
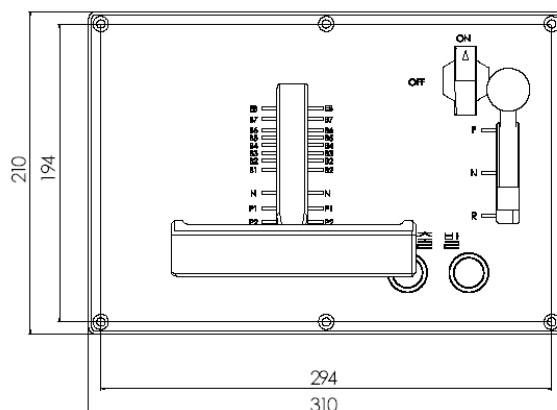
Technical description

- Master Controller built up of anodised aluminium parts. Main shaft is made of surface treated steel
- Handle and top plate can be easily customized with respect to customers demand
- Basically designed to be maintenance free and doesn't need to be greased -or oiled

Technical data

- Power supply: 10 VDC
- Weight: 10kg
- Analogues output level: 0,3 VDC- 9,7 VDC
- Digital output level: max 110 VDC and 3 A.
- Electrical interface: WEAM male connector

Dimensions



AQ Mekatronik AB

Phone: +46 278 322 50
www.aqg.se

