

Master Controller

MC 300

Features

- One analogue reference signal for traction and braking
- Emergency brake position
- Step less brake and traction sector
- 4 digital signals for main handle positions. (Costing, traction, braking, emergency brake)
- Thumb operated dead man switch
- Ergonomic handle with palm rest
- Main key operated switch
- Cruise control push button
- Forward and reverse control

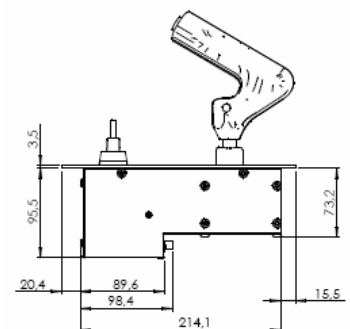
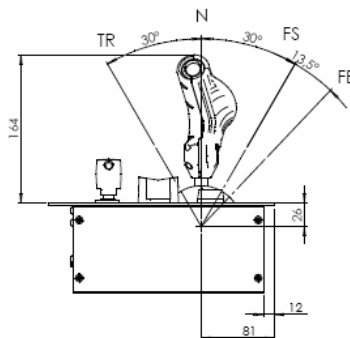
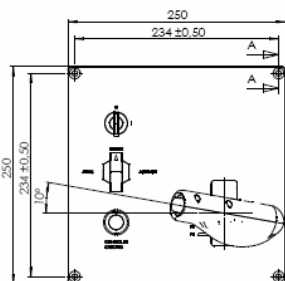


Technical description

- Master Controller constructed by steel and aluminium parts surface treated for tough conditions.

Technical data

- Power supply for analogue signals: DC 15V
- Weight: 10kg
- Analogues output level: 0,3 VDC- 9,7 VDC
- Electrical interface: Wago male connector
- 73,5° operating angle



AQ Mekatronik AB

Phone: +46 278 322 50
www.aqg.se

